



Multifamily Valet *Guide For* Landfill & Recycling

Down with dumpsters, up with valet!

Congratulations — As a tenant here, you'll no longer need to walk your trash to yucky salmonella encrusted dumpsters during our fierce Nebraska winters!

Instead, we provide the most convenient trash service available to multifamily living by picking up your trash & recycling from right outside your door!

Your Next Steps:

1. Grab your complimentary valet can
2. Read this packet and place the recycling guide somewhere convenient
3. Start placing your bagged materials in your can outside your door on designated days

If you have further questions:

- Download this packet: www.hillside.solutions/valet
- More learn about recycling right: www.hillside.solutions/quickstart
- Email: hello@hillside.solutions
- Check our FAQ section on the last page

Now, read and enjoy the service!

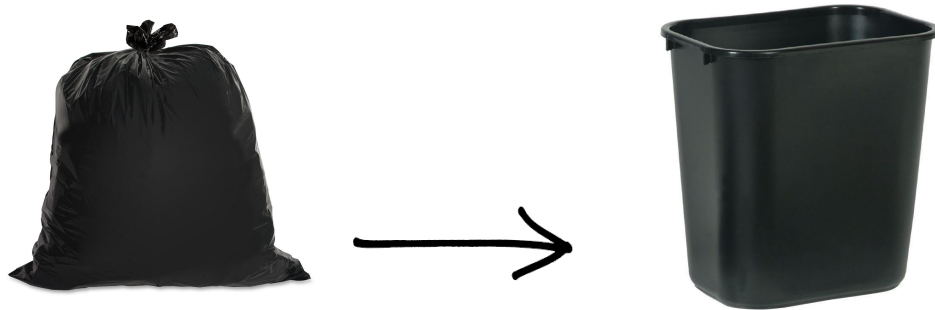
Sincerely,

The Hillside Solutions Crew

www.hillside.solutions/myvaletlife

LANDFILL PICKUP DAYS

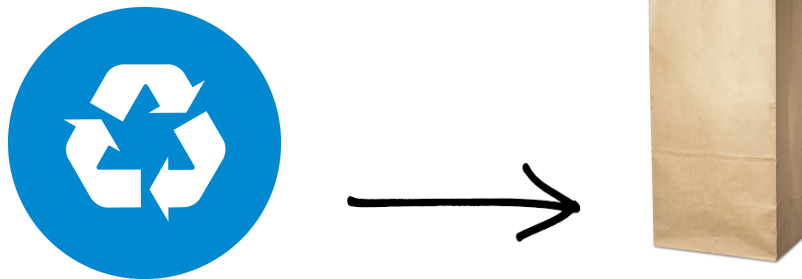
Monday / Wednesday / Friday — Container out before 8am



1. All trash **must** be placed in a tied bag, placed inside our provided container. If there's excess, additional bags can be placed on top of the trash container.
2. If cats are allowed, cat litter must be doubled bagged, and tied.
3. On pickup days, place bin outside door before 8 am.

RECYCLING PICKUP DAY

Wednesday — Paper bag out before 8am



1. **Place clean & dry** recycling items inside a clear plastic bag. Bag must be clear so we can ensure it's not landfill. Tie the top. **See recycling guide for best practices.**
2. **Hefty EnergyBag:** if participating, place clean & dry soft plastics (full list of items in recycling guide) inside orange bag. Place orange bag inside your clear plastic bag.
3. **Cardboard:** broken down and/or cut-up and placed inside clear plastic bag or if excess, placed in recycling dumpster.
4. On pickup day, place bag outside door before 8 am.

***Your items may be left at the door if** loose trash not bagged, bagging with grocery store bags, bags over 25 pounds, bulky items, leaking bags, bags with broken glass/sharp objects, boxes not broken down.

www.hillside.solutions/myvaletlife

SINGLE-STREAM RECYCLING

All materials must be
DRY / CLEAN / EMPTY
Placed in provided 30-gallon paper bag
Not encased in a plastic bag

PLASTICS

YES hard & rigid materials with the #'s 1, 2, 5 on the bottom.

NO soft plastics, straws, styrofoam, snack bags, take-out utensils, Seran wrap.

ASEPTIC CONTAINERS

YES milk cartons, juice boxes, Tetra paks

CARDBOARD

YES to corrugated, Amazon boxes, cereal.

NO to pizza boxes or anything wet/soiled.

PAPER

YES to mail, office paper, newspapers, magazines.

NO to paper towels, tissue, shredded paper (unless separately bagged), or anything wet or food stained.

METALS

YES to aluminum cans, tin/metal food containers, balled-up foil

NO to stuff with food or liquid still in it, metal appliances or cookware.

EnergyBag RECYCLING

All materials must be
DRY / CLEAN / EMPTY
Placed in Hefty EnergyBag
Then placed in provided paper bag

SOFT PLASTICS

YES to food wrappers & bags like chip bags, granola wrappers, pudding cups, condiment packets. Any soft & flimsy plastics like toothpaste tubes, thin plastic around new purchases.

PLASTIC UTENSILS

YES to plastic fork, knives, spoons, straws

STYROFOAM

YES to styrofoam take-out containers, coffee cups, packing peanuts, etc.

GLASS RECYCLING

All materials must be
EMPTY
Placed in Red Tote On-site
No Plastic Bags

JARS & BOTTLES ONLY

YES to wine & beer bottles, glass food jars. Labels & shards are okay.

NO to lightbulbs, mirrors, windshields, etc. No plastic bags or lids or caps.

FAQ's

I have a bunch of cardboard. What do I do with it?

- **Normal amount:** fold/cut it down to fit inside your recycling bag
- **Large amount:** fold it into the on-site recycling dumpster
- **Huge amount:** Take it to a free city recycling drop-off site listed at wasteline.org

What do I do with bulky items like a chair or couch?

Contact your property manager for options.

They missed me but got my neighbor. What happened?

It's possible you were missed, but first, make sure you're following the protocol and placing your material out before 8 am and leaving them out (if still there) until 5 pm. **Your items may be left at the door if** loose trash not bagged, bagging with grocery store bags, bags over 25 pounds, bulky items, leaking bags, bags with broken glass/sharp objects, boxes not broken down.

What if I leave town?

Use the on-site dumpsters, which can also be used for special circumstances like social gatherings that create excess waste, or when you have something extra smelly.

Holiday Schedule?

If any of the following holidays land on a weekday, expect a 1-day delay for hauling services extending into Saturday and resetting to normal after the weekend: Memorial Day, 4th of July, Labor Day, Thanksgiving Day, Christmas Day, New Year's Day.

Can I take the can with me when I move?

Please leave it for the next tenant. :)

How can I become a better recycler?

Check www.hillside.solutions/quickstartguide. You can also sign up for a food waste composting service at www.hillside.solutions/compostclub.

Other questions?

Feel free to check out our webpage, www.hillside.solutions/valet, or contact us at hello@hillside.solutions.