



Multifamily Valet *Guide For* Landfill & Recycling

Down with dumpsters, up with valet!

Congratulations — As a tenant here, you'll no longer need to walk your trash to yucky salmonella encrusted dumpsters during our fierce Nebraska winters!

Instead, we provide the most convenient trash service available to multifamily living by picking up your trash & recycling from right outside your door!

Your Next Steps:

1. Grab your complimentary valet can
2. Read this packet and place the recycling guide somewhere convenient
3. Start placing your bagged landfill in your can outside your door & your loose recycling in your brown paper bag on designated days

If you have further questions:

- Download this packet: www.hillside.solutions/valet
- More learn about recycling right: www.hillside.solutions/quickstart
- Email: hello@hillside.solutions
- Check our FAQ section on the last page

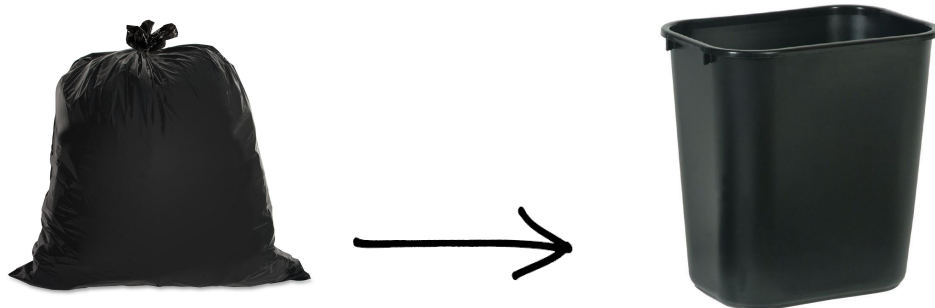
Now, read and enjoy the service!

Sincerely,

The Hillside Solutions Crew

LANDFILL PICKUP DAYS

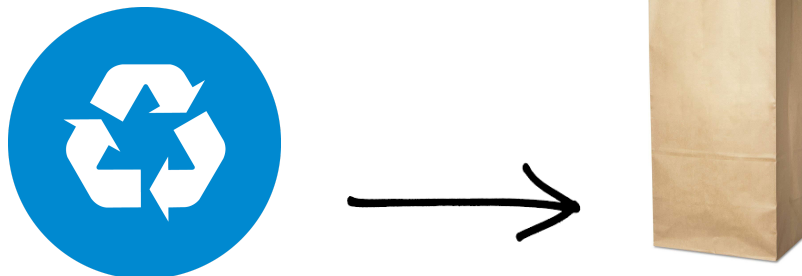
Between 8 am-5 pm, Monday / Wednesday / Friday



1. All trash **must** be placed in a tied bag, placed inside our provided container. If there's excess, additional bags can be placed on top of the trash container. **Do not place trash bags directly on the floor**, pretty please.
2. If cats are allowed, cat litter must be doubled bagged, and tied.
3. On pickup days, place bin outside the door before 8 am.

RECYCLING PICKUP DAYS

Between 8 am-5 pm, **West Farnam = Wed, Sycamore = Friday.**



1. **Place clean & dry recycling items inside 30-gallon paper bag we provide each week.** No plastic bags (other than Hefty EnergyBag's). **See recycling guide for best practices.**
2. **Cardboard must be broken down and/or cut-up and placed inside paper bag.** See FAQ for additional options.
3. On pickup day, place bag outside door before 8 am.

***Your items may be left at the door if** loose trash not bagged, bagging with grocery store bags, bags over 25 pounds, bulky items, leaking bags, bags with broken glass/sharp objects, boxes not broken down.

SINGLE-STREAM RECYCLING

All materials must be
DRY / CLEAN / EMPTY

Placed in provided paper bag

Don't encase in a plastic bag

PLASTICS

YES hard & rigid plastics sometimes listed with #'s 1, 2, 5.

NO soft plastics, straws, styrofoam, snack bags, take-out utensils, Seran wrap.

ASEPTIC CONTAINERS

YES milk cartons, juice boxes, Tetra paks

CARDBOARD

YES to corrugated, Amazon boxes, cereal.

NO to pizza boxes or anything wet/soiled.

PAPER

YES to mail, office paper, newspapers, magazines.

NO to paper towels, tissue, shredded paper (unless separately bagged), or anything wet or food stained.

METALS

YES to aluminum cans, tin/metal food containers, balled-up foil

NO to stuff with food or liquid still in it, metal appliances or cookware.

SOFT PLASTIC RECYCLING

All materials must be
DRY / CLEAN / EMPTY

Placed in Hefty EnergyBag

Then place in provided paper bag

FOOD WRAPPERS

YES to potato chip bags, candy wrappers, granola bar wrappers, shredded cheese packages, salad bags, frozen food bags, pudding cups, stand-up pouches, condiment packets.

PLASTIC SERVICEWARE

YES to plastic/foam cups, plates, bowls, plastic forks, knives, spoons, styrofoam to-go containers, plastic straws

VARIOUS SOFT PLASTIC & STYROFOAM

YES to plastic pet food bags, packing peanuts, plastic toothpaste tubes, thin plastic liner around new purchases.

NO to aluminum & steel cans, water & soda bottles, paper, cardboard, glass, food, liquids, medical products, hazardous waste, hoses, tubes, ropes

FAQ's

Can I recycle glass?

Yes! We have a red cart onsite that accepts just glass bottles & jars. No lids or other types of glass such as lightbulbs, mirrors, drinking glasses, windshields, etc.

I have a bunch of cardboard. What do I do with it?

- **Normal amount:** fold/cut it down to fit inside your recycling container
- **Medium amount:** fold it and place it behind your trash container, outside your door
- **Large amount:** if your community has one, fold it into a shared on-site recycling container
- **Huge amount:** Take it to a free city recycling drop-off site listed at wasteline.org

What do I do with bulky items like a chair or couch?

Contact your property manager for options.

They missed me but got my neighbor. What happened?

Your items may be left at the door if loose trash not bagged, bagging with grocery store bags, bags over 25 pounds, bulky items, leaking bags, bags with broken glass/sharp objects, boxes not broken down. Or if placed out/brought in too early.

What if I leave town?

We've provided an "Emergency Cart," which can also be used for special circumstances like social gatherings that create excess waste, or when you have something extra smelly. Please do not use these as your regular trash receptacle.

Why can't I just put my trash in the Emergency Cart under normal circumstances?

In short, it will throw our system off may create unintended problems or expenses.

If we provide you with recycling bags, how do you get an extra one?

Leave a note on your door on collection day or check with your property manager.

Holiday Schedule?

If any of the following holidays land on a weekday, expect a 1-day delay for hauling services extending into Saturday and resetting to normal after the weekend: Memorial Day, 4th of July, Labor Day, Thanksgiving Day, Christmas Day, New Year's Day.

Can I take the can with me when I move?

Please leave it for the next tenant.

How can I become a better recycler?

Check www.hillside.solutions/quickstartguide. You can also sign up for a food waste composting service at www.hillside.solutions/compostclub.

Other questions? Feel free to check out our webpage, www.hillside.solutions/valet, or contact us at hello@hillside.solutions.